

## ► Double sided matt surface

AKRYLON Soft Tone is an extruded acrylic sheet with the appearance and feel of traditional frosted glass.

Due to its outstanding properties, AKRYLON - Soft Tone provides a wide range of application possibilities for building and industrial glazing, decoration, lighting and advertising. Thanks to the double-sided matt surface of the material, images and text are to be seen clearly in all lighting conditions without distracting reflections.

Moreover, the relatively insensitive, easy to clean surface offers protection from scuffs, scratches and fingerprints.

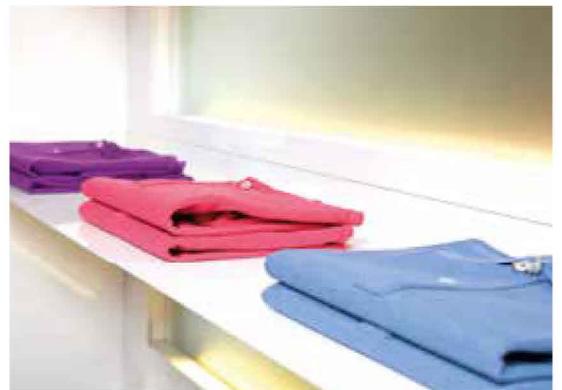
### CHARACTERISTICS

- Double-sided matt surface (single-sided matt on request)
- Improves light scatter
- Good optical properties
- Avoids reflective effects
- Stylish, trendy look
- Easy to maintain
- Easy to handle, fabricate and form
- Stable thickness tolerances
- Overlengths available



### APPLICATIONS

- Interior decoration
- Information signs
- Displays (improved illumination through matt structure)
- Showcases
- Shop fittings
- Advertising signs and media
- Furniture glazing
- Partition walls
- Lighting advertising



### PROCESSING

- |                               |                 |
|-------------------------------|-----------------|
| ■ Printing                    | ■ Polishing     |
| ■ Laminating                  | ■ Bonding       |
| ■ Sawing                      | ■ Welding       |
| ■ Drilling                    | ■ Hot bending   |
| ■ Thread cutting              | ■ Thermoforming |
| ■ Milling                     | ■ Tempering     |
| ■ Laser and water jet cutting |                 |



COLOUR	FEATURE	LT	SIZE (mm)	SHEETS PER PALLET							
				THICKNESS (mm)							
AKRYLON - Soft Tone				2.5	3	4	5	6	8	10	
Clear	double-sided matt	88%	2050 x 3050	·	40	30	25	20	·	·	
White 075	double-sided matt	75%	2050 x 3050	·	40	30	25	20	·	·	
Blue 019	double-sided matt	70%	2050 x 3050	·	·	·	·	·	·	·	
Green 101	double-sided matt	88%	2050 x 3050	·	·	·	·	·	·	·	
AKRYLON® – Soft Tone single-sided matt (to special conditions)											
AKRYLON® special conditions: Other thicknesses, colours and patterns can be produced to order, but are subject to special conditions (minimum order quantities, production lead times and price surcharge).											

LT = Light transmission (Figures apply to 3 mm sheet thickness only)

· = Non standard products are available in our product offer but subject to special conditions and minimum order quantities.

Products having a number of sheets per pallet in the table are available on stock.

The colours printed may vary from the original. To ensure exact colour matching please ask for a colour sample.

GENERAL			
Property	Method	Unit	AKRYLON – Soft Tone
Density	ISO 1183	g/cm <sup>3</sup>	1.19
Water absorption 24h/23°C – 50x50x4 mm <sup>3</sup>	DIN EN ISO 62 Method 1	%	0.2
Forming temperature air pressure		°C	140 – 160
Forming temperature vacuum		°C	160 – 190
Moulding shrinkage		%	0.5 – 0.8
MECHANICAL			
Property	Method	Unit	AKRYLON – Soft Tone
Tensile strength	ISO 527-2	MPa	70
Elongation at break	ISO 527-2	%	4
Tensile modulus	ISO 527-2	MPa	3200
Flexural strength	ISO 178	MPa	115
Impact strength Charpy unnotched	ISO 179-1	kJ/m <sup>2</sup>	17
Impact strength Charpy notched	ISO 179-1	kJ/m <sup>2</sup>	2
OPTICAL			
Property	Method	Unit	AKRYLON – Soft Tone
Light transmission (3 mm clear)	DIN 5036-3	%	88
Gloss Value**	DIN 67530		<35
THERMAL			
Property	Method	Unit	AKRYLON – Soft Tone
Vicat temperature (B 50)*	ISO 306	°C	104
Specific heat capacity	ISO 11357-4	J/gK	1.47
Linear thermal expansion $\alpha$	DIN 53752	mm/m °C	0.07
Thermal conductivity	DIN 52612	W/mK	0.19
Service temperature continuous use		°C	70
Max. temperature short term use		°C	90

\* = Pre-treatment: 16 h at 80°C

\*\* = The gloss value of CRYLON® standard grades is >100. The higher the determined non-dimensional value, the stronger is the surface brilliance of the examined work piece.

Note: These technical data of our products are typical ones; the actually measured values are subject to production variations.