

## Urano Wall with aluminium panels or glazed units

### Features

- Ventilated curtain wall
- External cover: aluminium panels or glazed units
- Structure made of aluminium mullions and mechanical supports
- Original accessories
- Finishing: anodized or painted
- Aluminium alloy EN AW-6060
- Integration with systems Poliedra-Sky 50I, 50S, 50CV, 60, Casement systems, Sunblades

### Advantages

- Protection of the building from atmospheric agents
- Energy saving and improved comfort in all seasons
- Acoustic insulation
- Natural ventilation with elimination of humidity
- Innovative external look

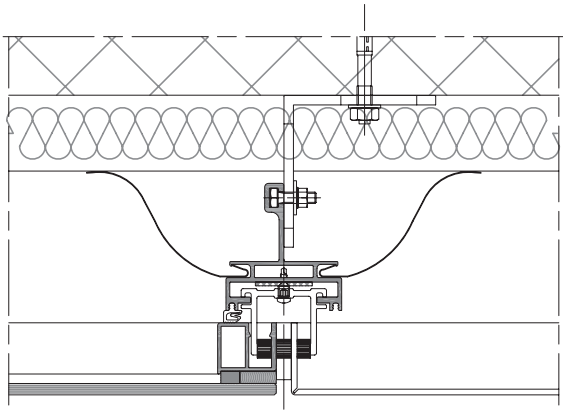
### Photovoltaic applications

The system enables the realization of “ventilated curtain walls” with insertion of photovoltaic panels of all typologies available on the market.

The covering units can be realized with laminated photo-voltaic panels, with no frame, with thickness up to 8 mm.

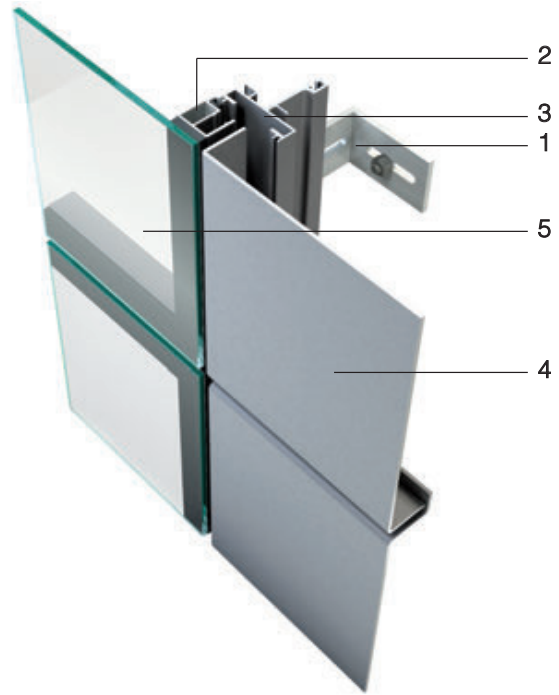


Section

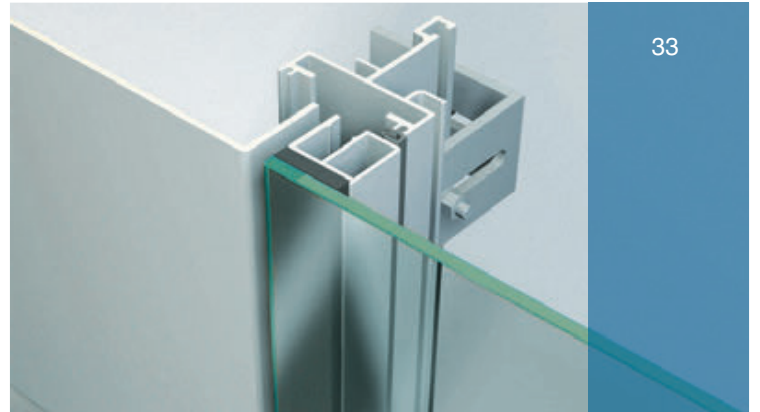


Horizontal section

Technology



- 1 - Fixing bracket
- 2 - Support for glass
- 3 - Mullion
- 4 - Aluminium panel
- 5 - Glazed unit



## Urano Wall with LAMINAM porcelain stoneware slabs

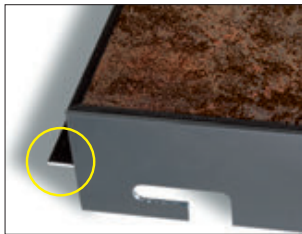
### Features

Urano Wall and Laminam Esterna join their performance values to offer new and exciting architectural opportunities of great aesthetical impact to the designers. Laminam Esterna is the result of Laminam research, world first producer of Gres Porcellanato slabs (1000x3000x3.5 mm), enabling their use in the ventilated curtain walls. Thanks to the dimension of the slabs, the wide range of available finishes and the easy installation, Urano Wall and Laminam come to the market as a new style alternative to the coverings currently used.

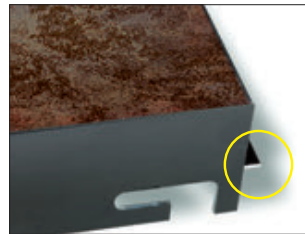
### Advantages

- Dimensions up to 1000x3000 mm
- Reduced thickness (3.5 mm)
- Inalterability and resistance to atmospheric agents and UV rays
- High wind load resistance performances
- Anti-graffiti and scratch-proof surface
- Easy cleaning and maintenance
- Wide range of finishing
- Easy installation
- Two fixing versions: mechanical and structural fixing

### Fixing system

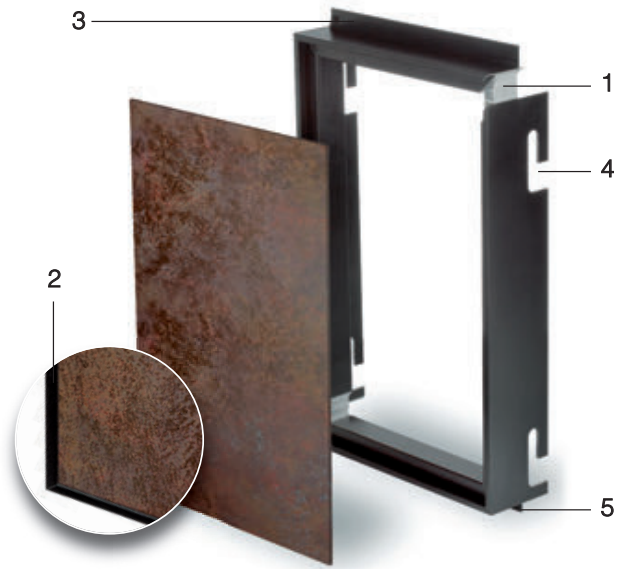


Mechanical

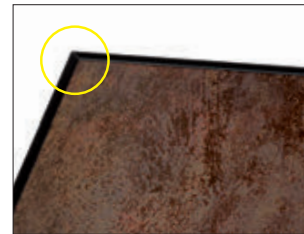


Structural

### Technology



- 1 - Joint hooking system for the aluminium frames in the mechanical fixing version
- 2 - Tightness frame in the mechanical fixing version
- 3 - Tightness upper profile
- 4 - Hooking
- 5 - Tightness lower profile



Mechanical safety stop of the mechanical system



Protection profile of the slab edge

### Installation sequence



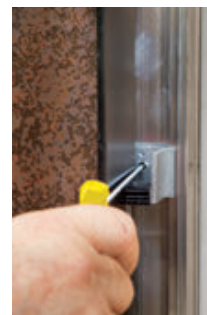
Joining the frame to the substructure



Mechanical anchoring of the connection system (Step 1)



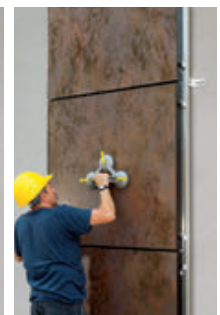
Mechanical anchoring of the connection system (Step 2)



Coupling pin for panel alignment. This pin enables the removal of a single panel, if necessary

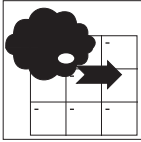


Portion of a finished curtain wall



Removal of a single panel

## Certified performance



### Wind load resistance EN 12179 - EN 13116

When the METRA curtain wall was subjected to a wind load equal to a speed of 216 km/h (2250 Pa), neither breakages nor permanent deformation occurred.

Load Q

Up to 2250 Pa according to the slab dimension

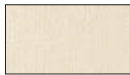
Capacity of a curtain wall door subjected to high pressure and/or suction, such as those caused by wind, to remain within admissible deformation limits and to conserve its initial properties so as to ensure protection and safety to the users.

## Finishing

### Metropolis



Fumo



Neve

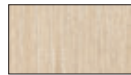


Moro

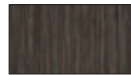


Nero

### Sketch



Avorio



Marrone



Nero

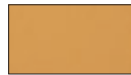


Noce

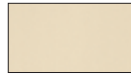
### Collection



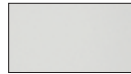
Abete



Arancio



Avorio



Bianco



Cielo



Corallo



Edera



Fumo



Lapis



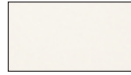
Moro



Nero intenso



Nero



Neve



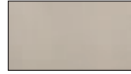
Notte



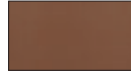
Perla



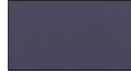
Tortora



Crusca



Orzo



Uva

### Filo



Argento



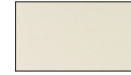
Bronzo



Ghisa



Oro



Brina



Mercurio



Pece



Rame

### Tredi



Basalto



Basalto Rid.



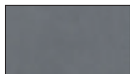
Carbonio Rid.



Carbonio



Zinco Rid.



Zinco

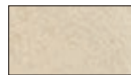
### Oxide



Grigio



Minimale



Avorio



Bianco



Moro mat



Moro



Nero



Perla

### Blend



Avorio



Grigio



Nero



Noce

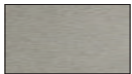
### I naturali



Basalto scuro



Marfil crema



Basalto chiaro



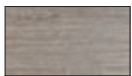
Travertino avorio



Ossidiana



Ossidiana chiara



Ossidiana grigia

### Filo romantico



Argento



Bronzo

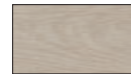


Ghisa



Oro

### Linfa



Canapa



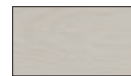
Cenere



Canapa



Corteccia



Cotone