

S3200

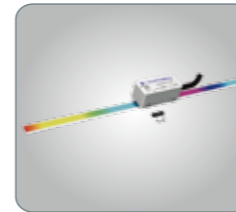


Printer Model	S3200			
Print Head Category	Ricoh Gen5(7PL)	Ricoh Gen6(5PL)	Konica 1024a(6PL)	Kyocera(3.5PL)
Printing Size	3200mm			
UV Lamp	UV LED light			
Rip Software	Photoprint/Onyx			Onyx/Caldera
Media Thickness	1-20mm			
Print Head NO.	2-9pcs		4-10pcs	
Ink Color	CMYK/LC/LM+W+V			CMYK/LC/LM+W
Resolution	//	726*600dpi	479*720dpi	726*1200dpi
	508*900dpi	726*900dpi	479*1080dpi	726*1800dpi
	508*1200dpi	726*1200dpi	479*1440dpi	726*2400dpi
Ink Tank Volume	2L			
Image Format	TIFF、JPEG、POSTSCRIPT、EPS、PDF			
Printing Speed	//	4Pass(3 Row) 81sqm/h	4Pass (2 Row) 71sqm/h	4Pass (1 Row) 52sqm/h
	6Pass(3 Row) 41sqm/h	6Pass(3 Row) 59sqm/h	6Pass (2 Row) 46.8sqm/h	6Pass (1 Row) 35sqm/h
	8Pass(3 Row) 27sqm/h	8Pass(3 Row) 43sqm/h	8Pass (2 Row) 33sqm/h	8Pass (1 Row) 26sqm/h
Power Supply	AC 220V,50/60HZ>30A			
Environment	Temperature 20-28 °C			
	Humidity 40-60%			
Machine Size	5320*1200 *1650mm			
Machine Weight	2680kg			
Outdoor Shelf Life	2Year(use DOCAN ink)			
Warranty Time	One year			

Technical specifications, designs are subject to change without prior notice.

General info

High Precision



X Axial equipped with 1 μm metal raster, gives a high precisely ink drops control. Makes only 1 micro tolerance on Bi-direction printing.

User Friendly



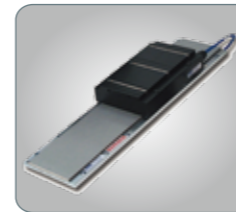
Ink level alarm to remind operator to reload ink when ink level low.

Media fixing Chuck



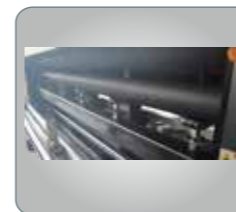
Avoid the media film deviation when printing.

Magelv Drive



Linear motor driving increasing 10% of carriage moving when acceleration and deceleration.

pinch rollers



5 pinch rollers in average keep the rubber roll force even.

Quiet Movement



Japan THK mute guiderail makes smooth movement and low noise come ture.

Material Protection



Water cooling plantform,reduce the heat impact for heat sensitive media, to avoid mateiral shrinkage and deformation.

Material Control



Tightly clamp soft medias,perfectly control with the right tension and the right feeding speed to get the best print results without any defects.

Convenient Control



The media feeding and collection rollers are equipped with speed and rotation direction controller.

Multiple Permutations



Km1024a Max 8 print heads. Kyocera Max 7 print heads.