

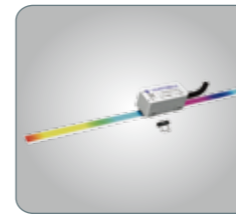
# H1600M



Printer Model	H1600M		
Print Head Category	Ricoh Gen6 (5PL)	Kyocera (3.5PL)	Kyocera (3.5PL)(D system)
Printing Size	2440x1220mm		
UV Lamp	UV LED light		
Rip Software	Photoprint/Onyx	Onyx/Caldera	
Media Thickness	1-100mm		
Print Head NO.	2-12pcs	2-8pcs	
Ink Color	CMYK/LC/LM+W+V	CMYK/LC/LM+W	
Resolution	726*600dpi	604*1200dpi	
	726*900dpi	604*1800dpi	
	726*1200dpi	604*2400dpi	
Ink Tank Volume	2L		
Image Format	TIFF、JPEG、POSTSCRIPT、EPS、PDF		
Printing Speed	4Pass(4 Row) 86sqm/h	4Pass(2 Row) 67sqm/h	High speed(2 Row) 90sqm/h
	6Pass(4 Row) 65sqm/h	6Pass(2 Row) 45sqm/h	Production(2 Row) 68sqm/h
	8Pass(4 Row) 43sqm/h	8Pass(2 Row) 34sqm/h	Quality(2 Row) 46sqm/h
Power Supply	AC 220V,50/60HZ>30A		
Enviroment	Temperature 20-28 °C		
	Humidity 40-60%		
Machine Size	4880*2160*1520mm		
Machine Weight	2150kg		
Outdoor Shelf Life	2Year(use DOCAN ink)		
Warranty Time	One year		

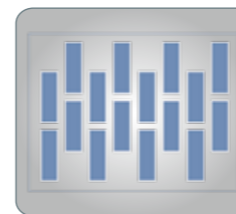
Technical specifications, designs are subject to change without prior notice.

High Precision



X Axial equipped with 1 μm metal raster, gives a high precisely ink drops control.Makes only 1 micro tolerance on Bi-direction printing.

Multiple Color Layout



Ricoh G6 Max 12 print heads.  
Kyocera Max 8 print heads.

Low Vibration



IGUS towline gives smooth moving during speed acceleration & deceleration, well protect inside cables and pipes.

Quiet Movement



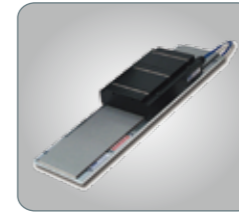
Japan THK mute guiderail makes smooth movement and low noise come ture.

Convinient Use



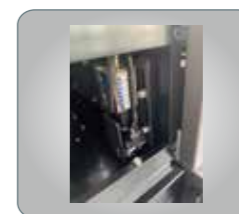
Separate solenoid valve purge system, saving operating steps and cleaning time.

Magelv Drive



Linear motor driving increasing acceleration and deceleration.

User Friendly



Detect Media height by one click.

Strong Power



Two vacuum pump for independent working zone control, enhance the fixation power.

Perfect Curing



High energy LED lamp for better curing on almost all kind of material.

Operation Friendly



Registration pin and ruler for material registration.