

FR3210TM



Printer Model	FR3210TM			
Print head Category	Kyocera (3.5PL)	Konica 1024a(6PL)	Ricoh Gen5(7PL)	Ricoh Gen6(5PL)
Printing Size	3200mm			
Head Carriage Movement	Linear motor			
UV Lamp	UV LED light			
Rip Software	Onyx/Caldera	Photoprint/Onyx		
Media Thickness	1-50mm			
Print Head NO.	2-10pcs	4-18pcs	2-16pcs	
Ink Color	CMYK/LC/LM+W	CMYK/LC/LM+W+V		
Resolution	726*1200dpi	479*720dpi	//	726*600dpi
	726*1800dpi	479*1080dpi	508*900dpi	726*900dpi
	726*2400dpi	479*1440dpi	508*1200dpi	726*1200dpi
Ink Tank Volume	2L			
Image Format	TIFF、JPEG、POSTSCRIPT、EPS、PDF			
Printing Speed	4Pass (2Row) 94sqm/h	4Pass (3Row) 92sqm/h	//	4Pass (4Row) 115qm/h
	6Pass (2Row) 63sqm/h	6Pass (3Row) 68sqm/h	6Pass (4Row) 58qm/h	6Pass (4Row) 83qm/h
	8Pass (2Row) 47sqm/h	8Pass (3Row) 46sqm/h	8Pass (4Row) 40qm/h	8Pass (4Row) 58qm/h
Power Supply	AC 220V,50/60HZ>30A			
Environment	Temperature 20-28 °C			
	Humidity 40-60%			
Machine Size	5890*1630*1580mm			
Machine Weight	2685kg			
Outdoor Shelf Life	2Year(use DOCAN ink)			
Warranty Time	One year			

Technical specifications, designs are subject to change without prior notice.

General info

High Precision



X Axial equipped with 1 μm metal raster, gives a high precisely ink drops control. Makes only 1 micro tolerance on Bi-direction printing.

User Friendly



Ink level alarm to remind operator to reload ink when ink level low.

S-Curve Shaft



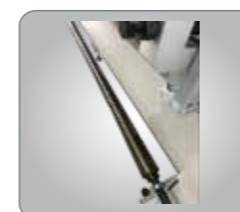
Rear pressure shaft in S-Curve makes media feeding no wrinkle, and gives suitable pressure to rigid media.

Perfect Curing



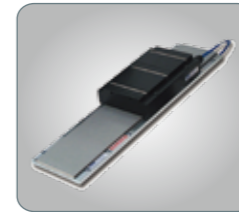
High energy LED lamp for better curing on almost all kind of material.

Convenient Use



Air inflation shaft for flex media feeding and collection.

Stable Movement



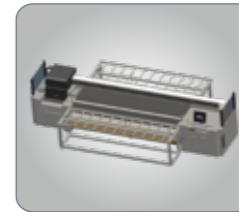
Linear motor driving increasing 10% of carriage moving when acceleration and deceleration.

Safety Care



Carriage installed with crash sensor, high sensitivity to ensure print head safety from accidentally damage. Anti-static device remove static on plastic media to make sure fine quality.

Multi-Function



Extension table assist client to print long rigid material.

Fast Adjustment



According to different printing media, table vacuum force is adjustable.

Quiet Movement



Japan THK mute guiderail makes smooth movement and low noise come true.